

Cor in F

Finale. Allegro assai.

1
Finale: Allegro assai.

Cor

p

7

6

19

fp

30

2

38

4

48

Solo

55

62

69

Cresc.

sf Dim.

76

p

fp

83

2

91

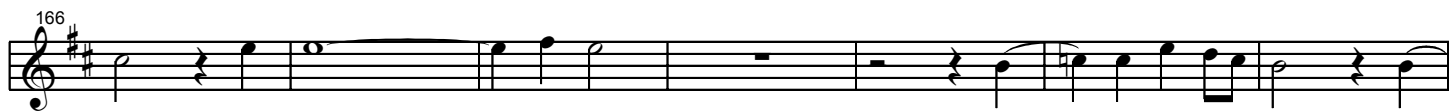
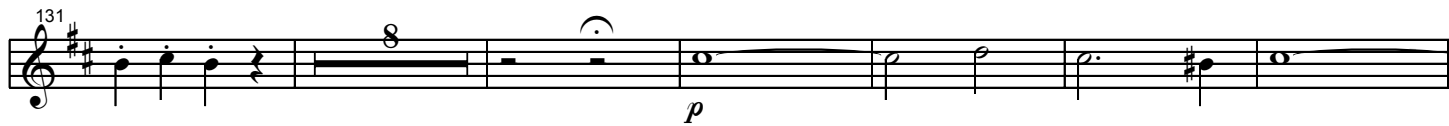
2

99

6

Meme mouvement

p



218 *Cresc.* *f* *p*

Musical staff 218-224 in treble clef, key of D major. It begins with a half rest, followed by a quarter note D, a quarter note E, and a quarter note F. A fermata is placed over the F. This is followed by a whole rest, then a half note G, and a quarter rest. A slur with a '2' indicates a pair of eighth notes G and A. This is followed by a whole rest, then a half note B, and a quarter rest. A slur with a '3' indicates a triplet of eighth notes B, C, and D. The staff ends with a quarter note D.

225 *Cresc.* *f*

Musical staff 225-232 in treble clef, key of D major. It begins with a quarter note D, a quarter note E, and a quarter note F. A slur with a '3' indicates a triplet of eighth notes G, A, and B. This is followed by a quarter note C, a quarter note D, and a quarter rest. A whole rest follows, then a half note E, and a quarter rest. A slur with a '2' indicates a pair of eighth notes F and G. This is followed by a whole rest, then a half note A, and a quarter rest. A slur indicates a pair of eighth notes B and C. The staff ends with a quarter note D.

233 *p* *Solo* *p*

Musical staff 233-240 in treble clef, key of D major. It begins with a whole rest, then a half note E, and a quarter rest. A slur with a '2' indicates a pair of eighth notes F and G. This is followed by a whole rest, then a half note A, and a quarter rest. A double bar line is present. The key signature changes to D minor. The staff continues with a half note B, a quarter rest, and a quarter note C. A slur indicates a pair of eighth notes D and E. The staff ends with a quarter note F.

241 *p*

Musical staff 241-255 in treble clef, key of D minor. It begins with a half note G, a quarter rest, and a whole rest. A slur with a '9' indicates a nine-measure rest. A double bar line is present. The staff continues with a half note A, a quarter rest, and a half note B. A slur indicates a pair of eighth notes C and D. The staff ends with a quarter note E.

256 *p*

Musical staff 256-267 in treble clef, key of D minor. It begins with a half note F, a quarter rest, and a whole rest. A slur with a '6' indicates a six-measure rest. The staff continues with a half note G, a quarter rest, and a half note A. A slur indicates a pair of eighth notes B and C. The staff ends with a quarter note D.

268 *fp*

Musical staff 268-274 in bass clef, key of D minor. It begins with a half note D, a quarter rest, and a whole rest. A slur indicates a pair of eighth notes E and F. The staff continues with a half note G, a quarter rest, and a half note A. A slur indicates a pair of eighth notes B and C. The staff ends with a quarter note D.

275

Musical staff 275-285 in bass clef, key of D minor. It begins with a half note E, a quarter rest, and a whole rest. A slur with a '5' indicates a five-measure rest. The staff continues with a half note F, a quarter rest, and a half note G. A slur indicates a pair of eighth notes A and B. The staff ends with a quarter note C.

286 *2* *4*

Musical staff 286-296 in treble clef, key of D minor. It begins with a half note D, a quarter rest, and a whole rest. A slur with a '2' indicates a pair of eighth notes E and F. The staff continues with a half note G, a quarter rest, and a half note A. A slur indicates a pair of eighth notes B and C. The staff ends with a quarter note D.

297 *Solo*

Musical staff 297-303 in treble clef, key of D minor. It begins with a half note E, a quarter rest, and a whole rest. A slur indicates a pair of eighth notes F and G. The staff continues with a half note A, a quarter rest, and a half note B. A slur indicates a pair of eighth notes C and D. The staff ends with a quarter note E.

304

Musical staff 304-310 in treble clef, key of D minor. It begins with a half note F, a quarter rest, and a whole rest. A slur indicates a pair of eighth notes G and A. The staff continues with a half note B, a quarter rest, and a half note C. A slur indicates a pair of eighth notes D and E. The staff ends with a quarter note F.

311

Musical staff 311-317 in bass clef, key of D minor. It begins with a half note D, a quarter rest, and a whole rest. A slur indicates a pair of eighth notes E and F. The staff continues with a half note G, a quarter rest, and a half note A. A slur indicates a pair of eighth notes B and C. The staff ends with a quarter note D.

318 *Cresc.* *sf Dim.*

Musical staff 318-324 in bass clef, key of D minor. It begins with a half note E, a quarter rest, and a whole rest. A slur indicates a pair of eighth notes F and G. The staff continues with a half note A, a quarter rest, and a half note B. A slur indicates a pair of eighth notes C and D. The staff ends with a quarter note E.

325 *p* *fp*

Musical staff 325-331 in bass clef, key of D minor. It begins with a half note F, a quarter rest, and a whole rest. A slur indicates a pair of eighth notes G and A. The staff continues with a half note B, a quarter rest, and a half note C. A slur indicates a pair of eighth notes D and E. The staff ends with a quarter note F.

332

340

348

359

366

381 Solo

388

394

402

409

442

449

456

ff

p

f

pp

f

p

p

p

f

f

2

2

6

9

3

4

22

10

472

p

479

486

p

493

Cresc.

503

f *p*

512

Cresc. *f* *p*

523

Cresc.

530

f *3* *3*

537

f *pp*

547

ff *Fine*